

Open Meeting of the Friends of the Gumstool Brook

Wednesday 29th November 2023

Flooding in the Siddington Area

Presentation by local resident Jan Bayley



The Common Siddington

Normal
conditions



The Common
December 2020

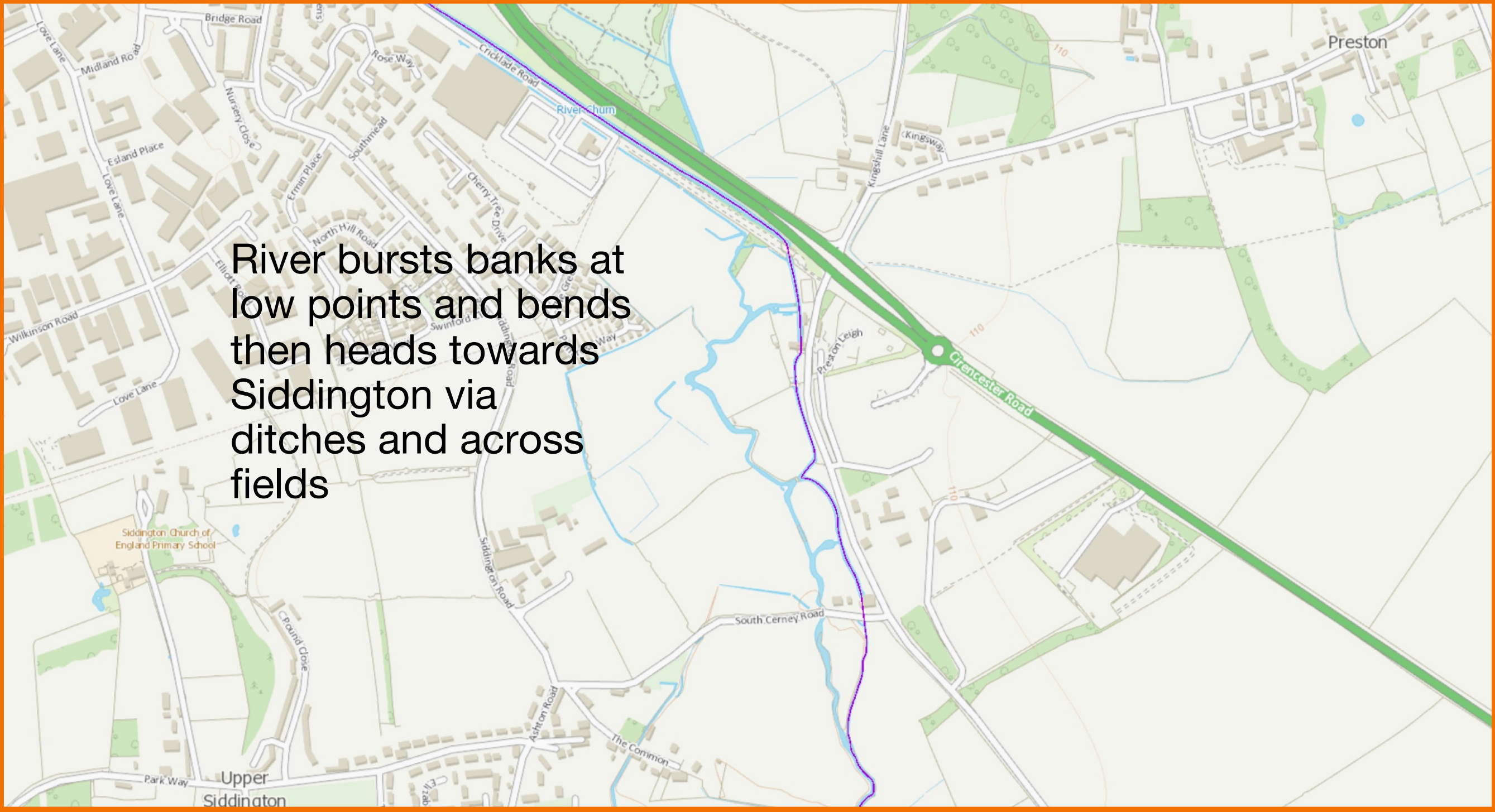
Looking
West from
the bridge



The Common
December 2020

Looking East
from the bridge

River Churn - Flood Sources

A map of the River Churn area, showing the river's course from the top left towards the bottom right. The river is highlighted in green. A purple line traces the path of flood water, starting from the river and spreading into surrounding fields and ditches. The map includes various roads such as Cricklade Road, Kingshill Lane, Greicester Road, and South Cerney Road. Other landmarks like Siddington Church of England Primary School and The Common are also labeled. The text 'River bursts banks at low points and bends then heads towards Siddington via ditches and across fields' is overlaid on the map.

River bursts banks at low points and bends then heads towards Siddington via ditches and across fields

High rainfall over a prolonged time raises the river level and obstructions, blockages and limited capacity at Siddington Mill bridge forces the river to break its banks at low points



South Cerney Road - in flood



South Cerney Road

Other flood sources, blockages and obstructions

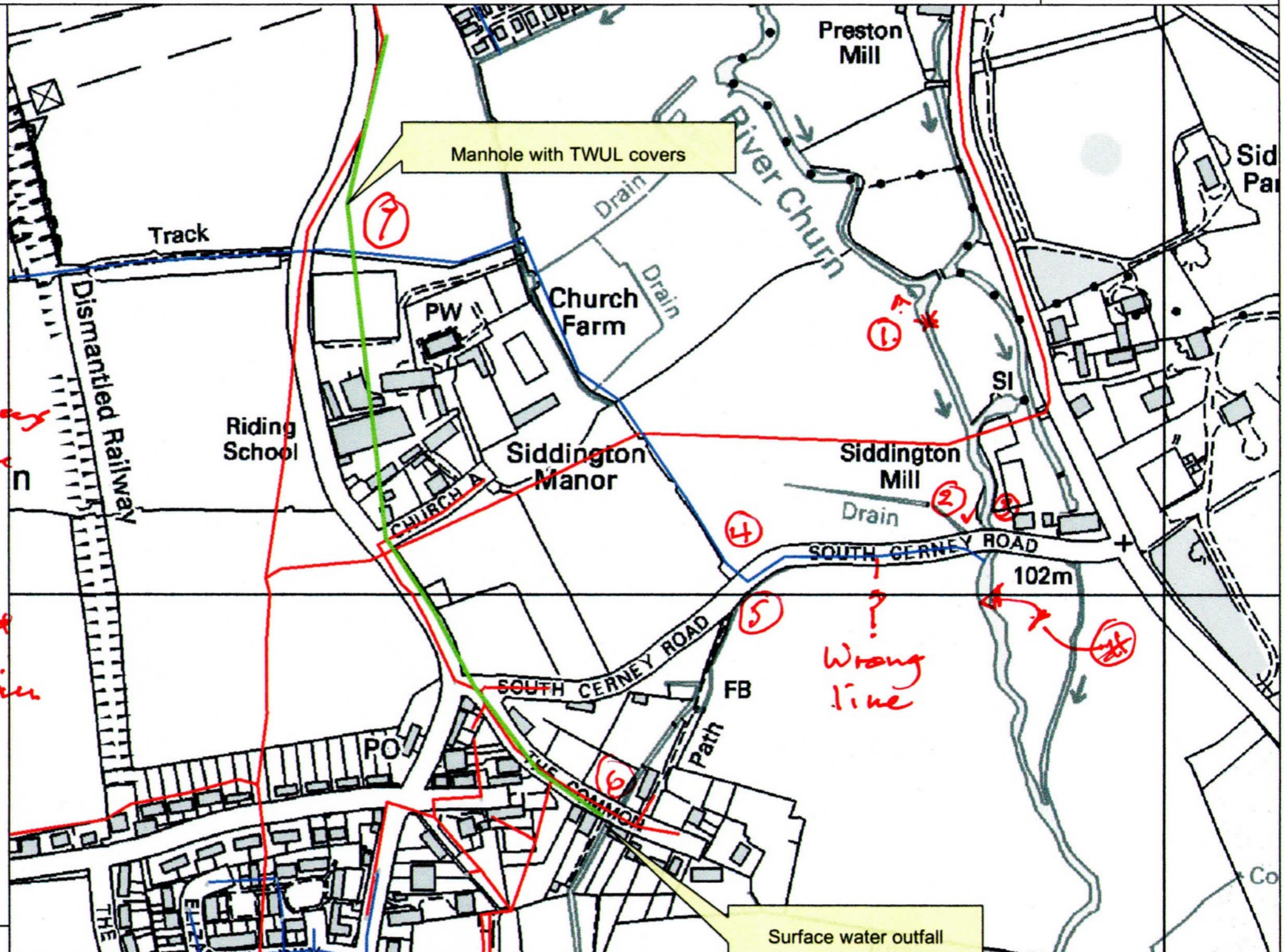
Siddington Surface extent



Legend Sewer Network - by Type

- Combined
- Foul
- Surface
- Other

1. Obstructions + Dam in river channel
2. Blocked drain + culvert
3. Restricted spillways above + below bridge
- 4+5: Restricted culvert + ditch
6. Road + kerb removed
7. Collapsed TW Drain



0 40 80 120 m.



© Crown Copyright and database right 2014. Ordnance Survey licence number 100024198.

Blockages in River Churn





Blocked culverts

Siddington Mill Bridge

Note Tide mark shows river level reaches apex of bridge

December
2020



Possible flood attenuation and maintenance



Siddington Surface extent

Legend

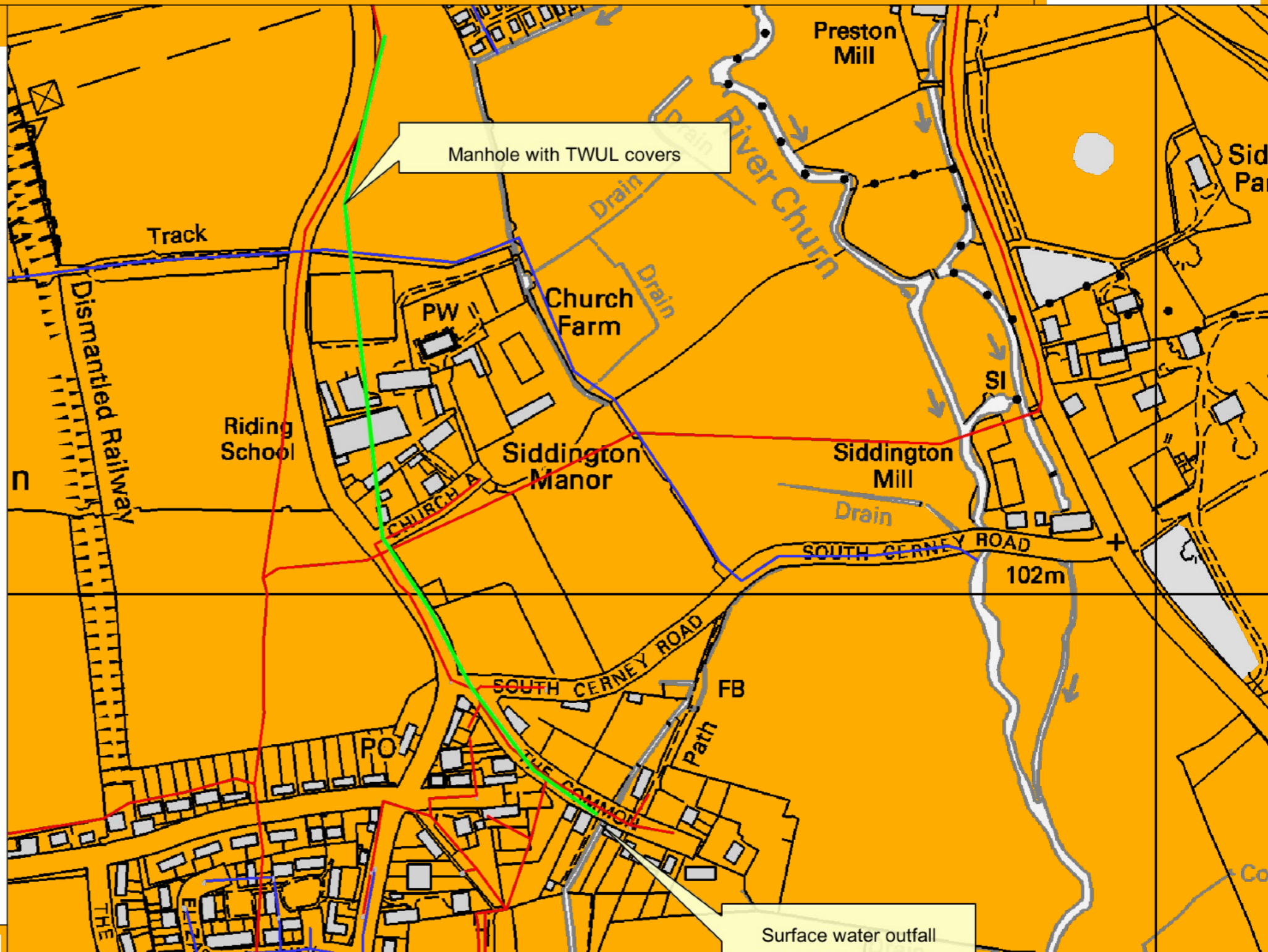
Sewer Network - by Type


- Combined
- Foul
- Surface
- Other

Possible additional culvert (s) under South Cerney road

Improved overflows at bridge

Keeping river course and ditches clear

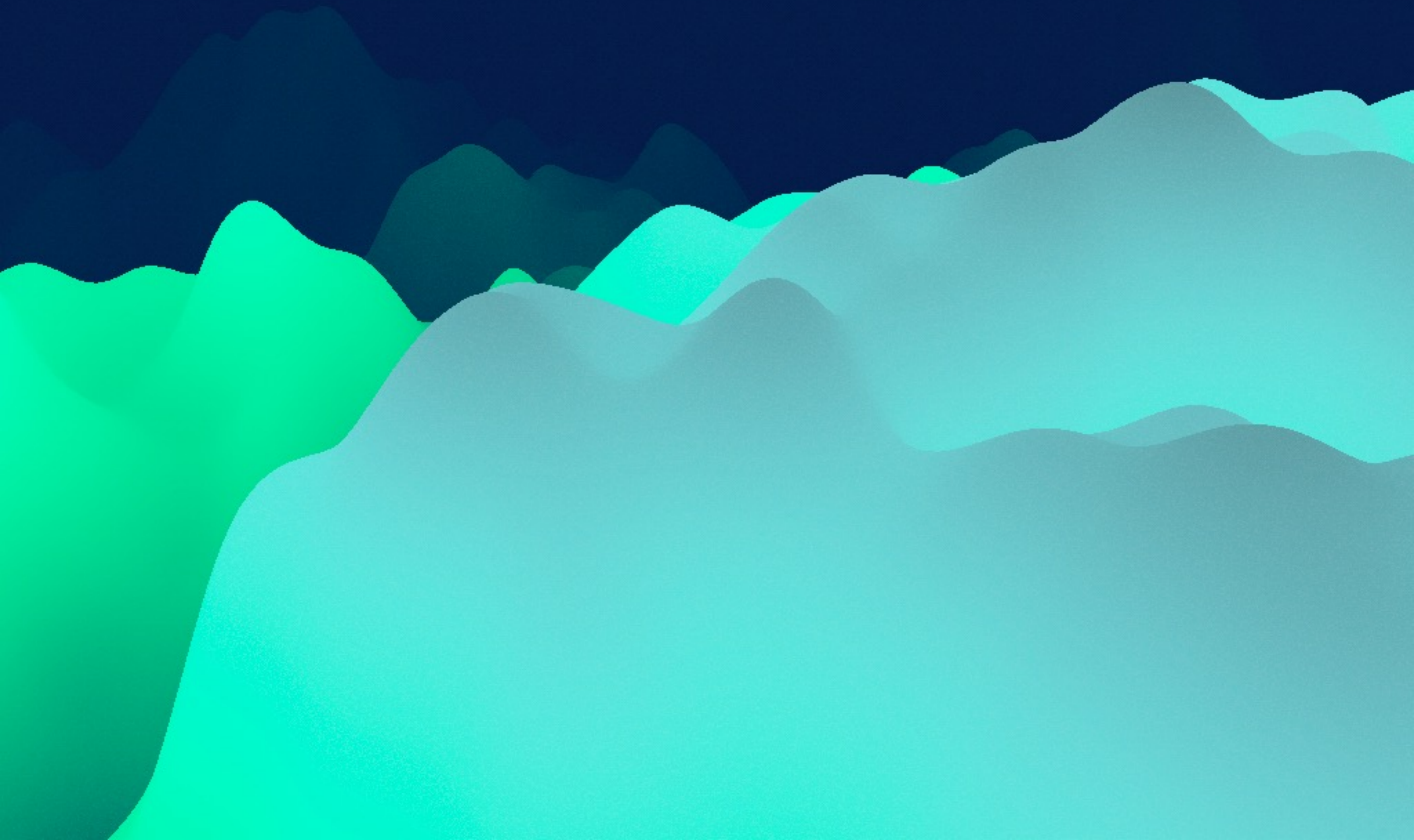




Despite some clearance of river channel and maintenance of existing ditches and culverts, river level still reaching apex of bridge

Thursday 12th January 2023

END



END

